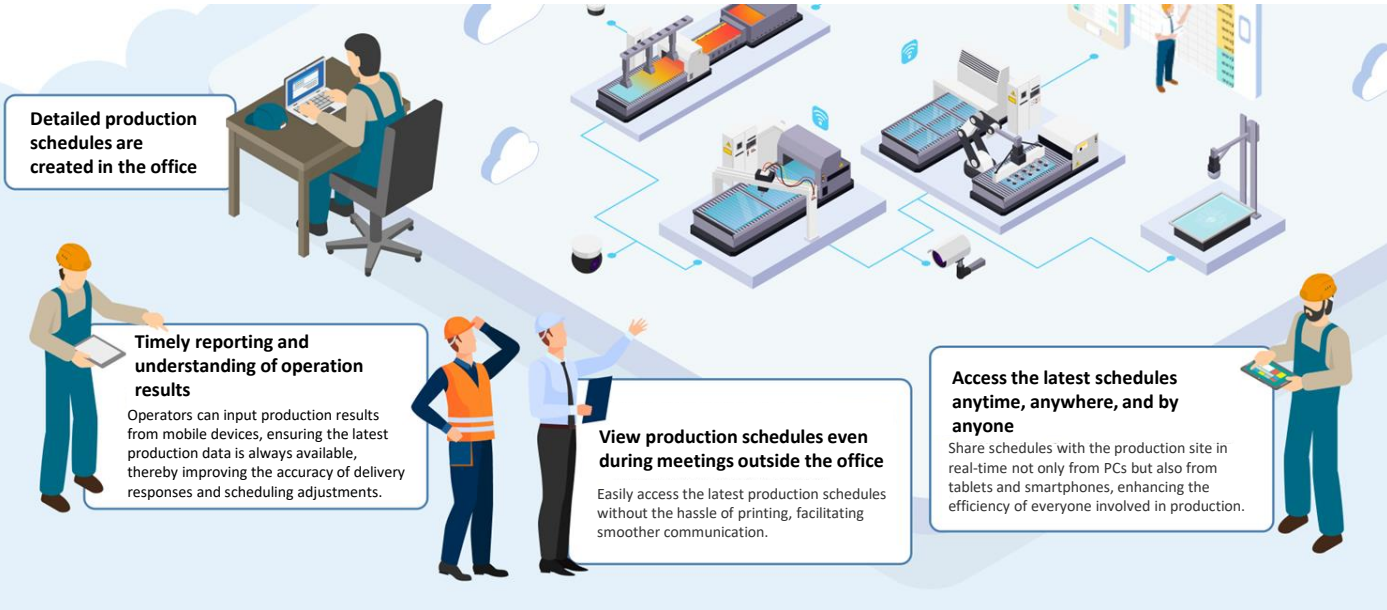




Asprova My Schedule

A dedicated web application for Asprova that bridges the gap between production scheduling and the shop floor.



Asprova My Schedule is an optional feature that allows you to view production schedules created in Asprova via a web browser and also enables input of results and adjustment of equipment capacity values.

With Asprova alone, scheduling and viewing were only possible from PCs, limiting access to information. By using My Schedule, the production management department, as well as each operator in manufacturing and inspection processes, can access the latest schedules and input data in real-time using mobile devices.

Asprova My Schedule is a highly anticipated new optional feature that enhances communication of production-related information and streamlines overall factory operations.

Implementation Effects



The screen is very easy to see and the product is user-friendly

When we wanted to make Asprova's production schedules accessible on the shop floor, we discovered My Schedule, which can be easily implemented using mobile devices. This eliminated the need for printed schedules, and it has been well-received by the shop floor operators.

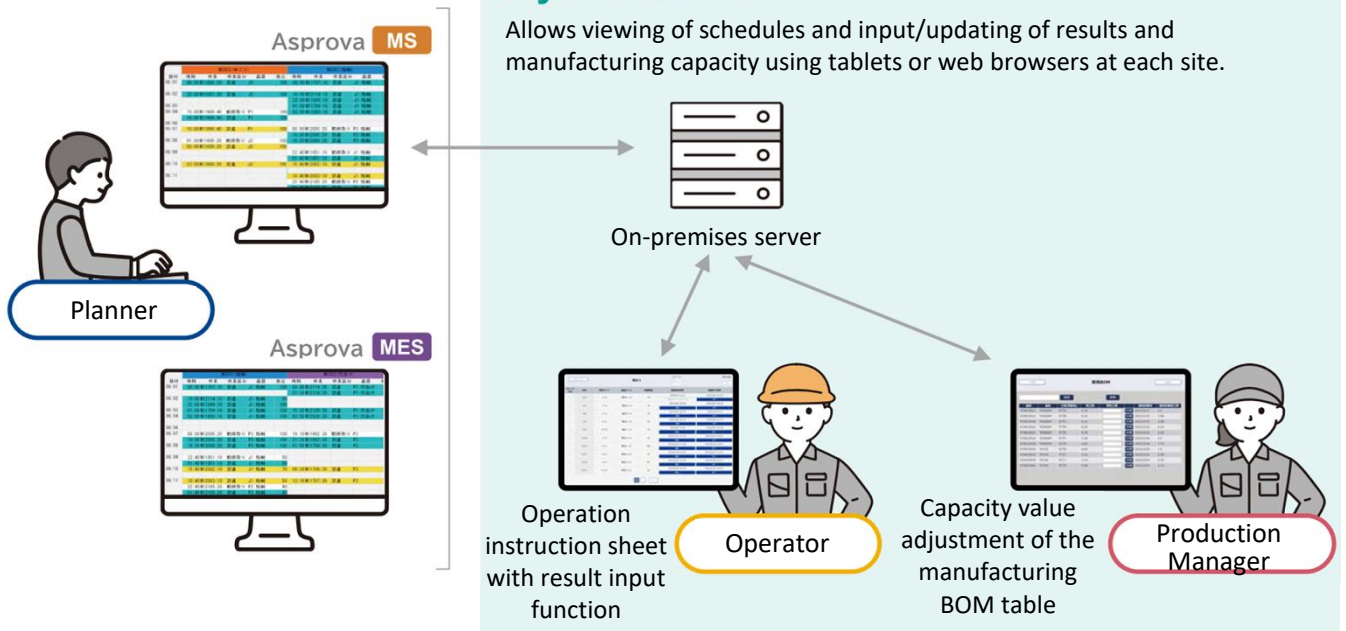


Collaboration among on-site operators has become easier

Over 200 personnel in our company use My Schedule continuously. By using My Schedule, we can constantly monitor information such as how long the next process can wait for intermediate products from our process, leading to smoother overall production in the factory.

My Schedule

Allows viewing of schedules and input/updating of results and manufacturing capacity using tablets or web browsers at each site.



01

View schedules via web browser regardless of the device

02

Timely registration of production results from each device

03

Edit capacity values of the manufacturing BOM (Bill of Materials)

04

Dashboard for easy comparison of schedules and actual results

The screenshot shows the Asprova software interface. On the left, a Gantt chart displays production schedules for various resources (混合 1, 充填 1, 充填 2, 充填 3, 検査 1) across the months of May and June. On the right, a detailed view of the selected content (混合 1) shows a list of production tasks with their start and end times and statuses. Below the Gantt chart, a tablet displays a detailed production schedule table.

リリースする	日付	作業コード	品目コード	製造数量	製造開始日時	製造終了日時
<input type="checkbox"/>	6/2	2:10	製品A-10	30	2022/6/2 8:10	2022/6/2 15:43
<input type="checkbox"/>	6/2	7:10	製品D-10	90	2022/6/2 8:12	2022/6/2 15:54
<input type="checkbox"/>	6/3	3:10	製品B-10	25	2022/6/2 16:53	2022/6/3 16:53
<input type="checkbox"/>	6/3	7:10	製品C-10	80	2022/6/2 18:10	2022/6/2 18:40
<input type="checkbox"/>	6/3	18:03	製品A-20	50	2022/6/3 18:03	2022/6/6 8:03
<input type="checkbox"/>	6/2	17:43	製品B-20	30	2022/6/2 17:43	2022/6/3 8:07
<input type="checkbox"/>	6/14	1:10	製品A-10	50	2022/6/13 13:10	2022/6/14 10:45
<input type="checkbox"/>	6/15	5:10	製品C-10	100	2022/6/14 17:20	2022/6/15 16:30
<input type="checkbox"/>	6/17	9:10	製品D-10	35	2022/6/16 21:06	2022/6/17 11:56
<input type="checkbox"/>	6/20	4:10	製品A-10	60	2022/6/17 12:36	2022/6/20 12:42
<input type="checkbox"/>	6/21	15:10	製品D-10	50	2022/6/20 16:40	2022/6/21 10:00

